

BRING ON THE SNOW

Sportz Outdoor plans visiting athletes and film tonight

PAGE 7

MARKETS + PAGE 13

4 BUSINESS OUTLOOK

THURSDAY, NOVEMBER 1, 2007

The Pacific Rim, trust the chef,

Up to now, you had to be a wealthy traveler or a shark to eat your way around the Pacific Rim. But for landlubbers on limited budgets, we have Pacific Paradise.

Husband and wife Denny Deng and Ling Zhang opened the new restaurant in the small strip at San Pedro and Candelaria, but it makes stops at the kitchens of China, Japan, Thailand, Singapore, Malaysia, Mongolia, Vietnam, Korea and Hawaii. You can have spicy eggplant from Thailand, sea bass in black pepper sauce from Malaysia, grilled beef lettuce wraps from Korea, golden crispy chicken from Hawaii, stir-frys, fried rice and noodles, sushi, sashimi, tempura and more, more, more. (Cue the "Jaws" theme.)

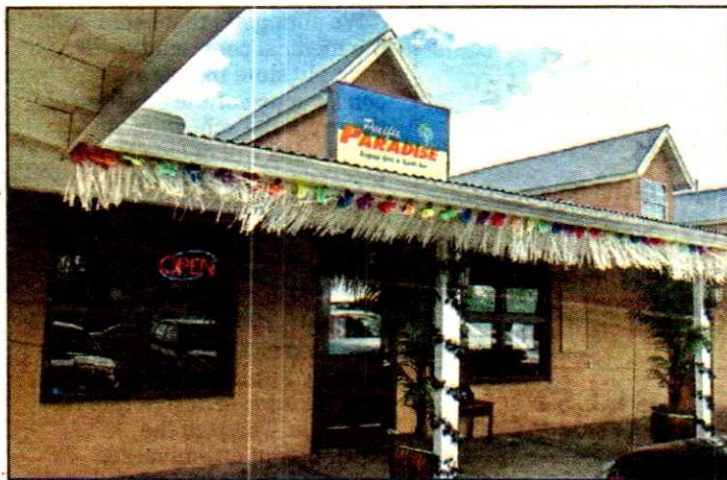
Deng does a few Pacific Paradise specialties — cross-cultural dishes, sometimes with an American accent, like Seafood Rice Pizza: scallops, jumbo shrimp, fish fillet and surimi, stir-fried with jasmine rice, egg and pineapple, sprinkled with cheese and baked, \$15.50.

Prices range from \$2.95 for a cup of soup to \$23.95 for Pacific Paradise Grilled Seafood special that includes jumbo shrimp, scallops, soft shell crab and a small serving of grilled salmon teriyaki. A few dishes for two (or one person who eats like a shark) are higher; most are in the \$10-to-\$15 range.

The restaurant is open every day for lunch and dinner.

For further information, call 881-0999.

EXPERIENCE: If you can't trust a chef whose previous restaurant experience includes the Standard Diner, the Range



GREG SORBER/JOURNAL

Pacific Paradise is at San Pedro and Candelaria.



GREG SORBER/JOURNAL

Joyce Smith, left, eats at Pacific Paradise for the 16th time, with Amber Row.

The Dish



SUSAN STIGER
Of the Journal

commute and busy families.

"That's a need I had as a father," Wulf said.

Special dinners are also on the way, starting with a wine dinner, probably Nov. 10, in a smaller room that seats 16 to 20 people. The restaurant seats about 100.

Prices range from \$3.95 for kids' stuff to \$18.95 for grilled beef "scampi." The restaurant is at 12165 N. Highway 14 in